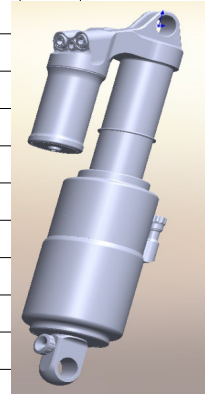


Empfehlung Luftdruck für BOS Void verbaut im Solid Strike

Körpergewicht [kg] Luftdruck [psi]	117	123	129	135	141	147	153	159	165	171	177	183	189
45	27%												
50	30%	27%											
55	33%	30%	27%										
60		33%	30%	27%									
65			33%	30%	27%								
70				33%	30%	27%							
75					33%	30%	27%						
80						33%	30%	27%					
85							33%	30%	27%				
90								33%	30%	27%			
95									33%	30%	27%		
100										33%	30%	27%	
105											33%	30%	27%
110												33%	30%
115													33%



- 27% sag (hart)
- 30% sag (standard)
- 33% sag (weich)

Empfehlung Federrate für Stahlfeder-Dämpfer verbaut im Solid Strike

Körpergewicht [kg] Federrate [lbs/inch]	200	250	300	350	400	450	500	550									
45	30%																
50	33%	27%															
55	33%	30%	27%														
60		33%	30%	27%													
65			33%	30%	27%												
70				33%	30%	27%											
75					33%	30%	27%										
80						33%	30%	27%									
85							33%	30%									
90								33%									
95									33%								
100										33%							
105											33%						
110												33%					
115													33%				
120														33%			
125															33%		
130																33%	
135																	33%



Empfehlung Luftdruck für RockShox Vivid Air verbaut im Solid Strike

Körpergewicht[kg] Luftdruck [psi]	121	134	146	158	170	180	190	200	210	223	235	256	275
45													
50	27%												
55	30%	27%											
60	33%	30%	27%										
65		33%	30%	27%									
70			33%	30%	27%								
75				30%	30%	27%							
80				33%	30%	30%	27%						
85					33%	30%	30%	27%					
90						33%	30%	30%	27%				
95							33%	30%	30%	27%			
100								33%	30%	30%	27%		
105									33%	30%	30%		
110										33%	30%	27%	
115											30%	30%	
120											33%	30%	27%
125												30%	30%
130												33%	30%
135													30%

27% sag (hart)

30% sag (standard)

33% sag (weich)